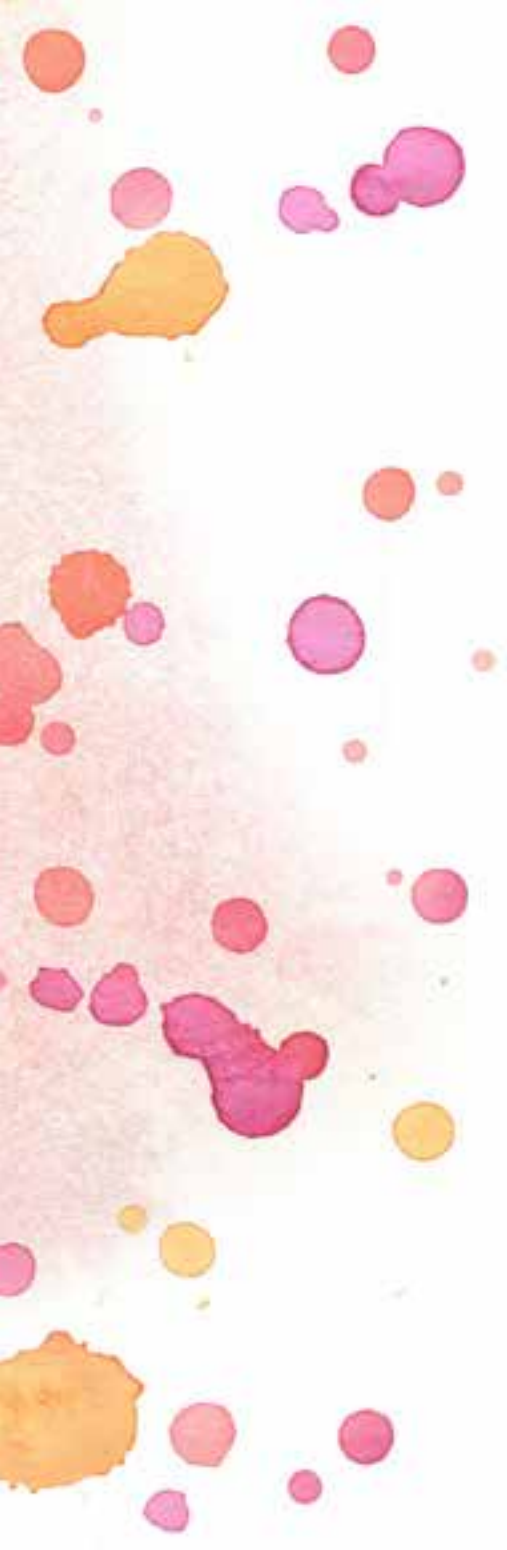




RESIST PEN

Cosmo Cricket . .
julie comstock™



DRAWING WATERCOLOR RESISTS:

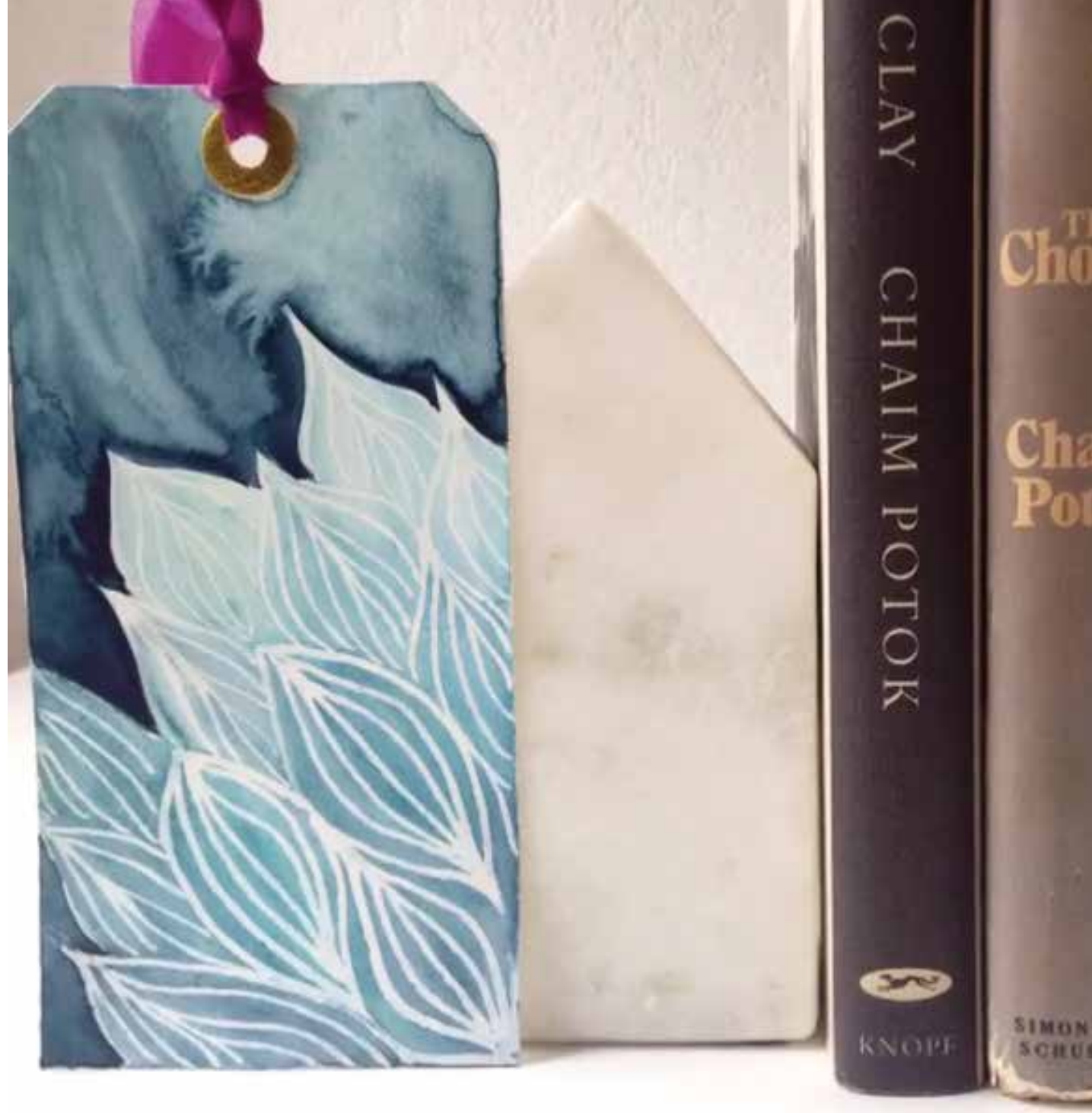
1. Pump the resist pen on a little scratch piece of paper until the resist is flowing well. Then draw lines.

You want to wait until the resist is completely dry before painting! It just takes a couple minutes. You can tell when it's ready to go because it's glossy when it's wet.

After it's dry just start painting. Don't worry if some of the paint doesn't roll completely off the resist, you can clean it up after it's all painted with a damp brush. It won't stick, so when the brush sweeps over it, it will lift right off. Use your towel to wipe your brush clean in between each sweep.



[CLICK HERE FOR A VIDEO TUTORIAL](#)



[CLICK HERE FOR A VIDEO TUTORIAL](#)

[CLICK HERE FOR A STEP-BY-STEP TUTORIAL](#)



Create highlights with the Resist Pen

[CLICK HERE FOR A VIDEO TUTORIAL](#)

[CLICK HERE FOR A STEP-BY-STEP TUTORIAL](#)



#RESISTPEN
#COSMOCRICKET
#JUSTADDWATERCOLOR
#WATERCOLOR

FOR MORE INSPIRATION:
[BLOG](#)
[INSTAGRAM](#)
[FACEBOOK](#)

FOR PRODUCT AND
SOCIAL MEDIA IMAGES:
[CLICK HERE](#)

PRODUCTS FEATURED:
Resist Pen COS68740 MOQ6 MSRP \$5.99